



J317 |

Style J317 Measurements:

	XS	S	M	L	XL	2XL	3XL	4XL	5XL	6XL
Chest Width	20	21½	23	24½	26	27½	29½	31½	33½	35½
Body Length at Back	26½	27½	28½	29½	30½	31½	32	32½	33	33¼
Sleeve Length from Center Back	33¾	34½	35¼	36	36¾	37½	38¼	39	39½	40

Chest Width

Measured across the chest one inch below armhole when laid flat.

Body Length at Back

Measured from high point shoulder to finished hem at back.

Sleeve Length from Center Back

Measure From CB Neck to Shoulder Point to Finished Sleeve Hem.



View 11

Style J317 Measurements:

	XS	S	M	L	XL	2XL	3XL	4XL	5XL	6XL
Chest Width	20	21½	23	24½	26	27½	29½	31½	33½	35½
Body Length at Back	26½	27½	28½	29½	30½	31½	32	32½	33	33¼
Sleeve Length from Center Back	33¾	34½	35¼	36	36¾	37½	38¼	39	39½	40

Chest Width

Measured across the chest one inch below armhole when laid flat.

Body Length at Back

Measured from high point shoulder to finished hem at back.

Sleeve Length from Center Back

Measure From CB Neck to Shoulder Point to Finished Sleeve Hem.

XL
0 0

XL 6XL
0 0
i.00 +\$7.00

oidery

TRUE



ted

:S?



Style J317 Measurements:

	XS	S	M	L	XL	2XL	3XL	4XL	5XL	6XL		
P A r u r	Chest Width	20	21½	23	24½	26	27½	29½	31½	33½	35½	id
	Body Length at Back	26½	27½	28½	29½	30½	31½	32	32½	33	33¼	
	Sleeve Length from Center Back	33¾	34½	35¼	36	36¾	37½	38¼	39	39½	40	nt

Chest Width

Measured across the chest one inch below armhole when laid flat.

Body Length at Back

Measured from high point shoulder to finished hem at back.

O | Sleeve Length from Center Back

Measure From CB Neck to Shoulder Point to Finished Sleeve Hem.

R |



Style J317 Measurements:

	XS	S	M	L	XL	2XL	3XL	4XL	5XL	6XL
Chest Width	20	21½	23	24½	26	27½	29½	31½	33½	35½
Body Length at Back	26½	27½	28½	29½	30½	31½	32	32½	33	33¼
Sleeve Length from Center Back	33¾	34½	35¼	36	36¾	37½	38¼	39	39½	40

Chest Width

Measured across the chest one inch below armhole when laid flat.

Body Length at Back

Measured from high point shoulder to finished hem at back.

Sleeve Length from Center Back

Measure From CB Neck to Shoulder Point to Finished Sleeve Hem.



Style J317 Measurements:

	XS	S	M	L	XL	2XL	3XL	4XL	5XL	6XL
Chest Width	20	21½	23	24½	26	27½	29½	31½	33½	35½
Body Length at Back	26½	27½	28½	29½	30½	31½	32	32½	33	33¼
Sleeve Length from Center Back	33¾	34½	35¼	36	36¾	37½	38¼	39	39½	40

Chest Width

Measured across the chest one inch below armhole when laid flat.

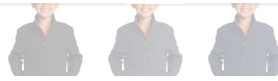
Body Length at Back

Measured from high point shoulder to finished hem at back.

Sleeve Length from Center Back

Measure From CB Neck to Shoulder Point to Finished Sleeve Hem.





Style J317 Measurements:

	XS	S	M	L	XL	2XL	3XL	4XL	5XL	6XL
Chest Width	20	21½	23	24½	26	27½	29½	31½	33½	35½
Body Length at Back	26½	27½	28½	29½	30½	31½	32	32½	33	33¼
Sleeve Length from Center Back	33¾	34½	35¼	36	36¾	37½	38¼	39	39½	40

Chest Width

Measured across the chest one inch below armhole when laid flat.

Body Length at Back

Measured from high point shoulder to finished hem at back.

Sleeve Length from Center Back

Measure From CB Neck to Shoulder Point to Finished Sleeve Hem.

[VIEW PRODUCT](#)



Style J317 Measurements:

	XS	S	M	L	XL	2XL	3XL	4XL	5XL	6XL
Chest Width	20	21½	23	24½	26	27½	29½	31½	33½	35½
Body Length at Back	26½	27½	28½	29½	30½	31½	32	32½	33	33¼
Sleeve Length from Center Back	33¾	34½	35¼	36	36¾	37½	38¼	39	39½	40

Chest Width

Measured across the chest one inch below armhole when laid flat.

Body Length at Back

Measured from high point shoulder to finished hem at back.

Sleeve Length from Center Back

Measure From CB Neck to Shoulder Point to Finished Sleeve Hem.



Style J317 Measurements:

	XS	S	M	L	XL	2XL	3XL	4XL	5XL	6XL
Chest Width	20	21½	23	24½	26	27½	29½	31½	33½	35½
Body Length at Back	26½	27½	28½	29½	30½	31½	32	32½	33	33¼
Sleeve Length from Center Back	33¾	34½	35¼	36	36¾	37½	38¼	39	39½	40

Chest Width

Measured across the chest one inch below armhole when laid flat.

Body Length at Back

Measured from high point shoulder to finished hem at back.

Sleeve Length from Center Back

Measure From CB Neck to Shoulder Point to Finished Sleeve Hem.



Style J317 Measurements:

	XS	S	M	L	XL	2XL	3XL	4XL	5XL	6XL
Chest Width	20	21½	23	24½	26	27½	29½	31½	33½	35½
Body Length at Back	26½	27½	28½	29½	30½	31½	32	32½	33	33¼
Sleeve Length from Center Back	33¾	34½	35¼	36	36¾	37½	38¼	39	39½	40

Chest Width

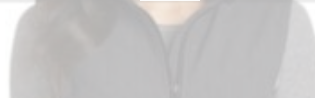
Measured across the chest one inch below armhole when laid flat.

Body Length at Back

Measured from high point shoulder to finished hem at back.

Sleeve Length from Center Back

Measure From CB Neck to Shoulder Point to Finished Sleeve Hem.



Style J317 Measurements:

	XS	S	M	L	XL	2XL	3XL	4XL	5XL	6XL
Chest Width	20	21½	23	24½	26	27½	29½	31½	33½	35½
Body Length at Back	26½	27½	28½	29½	30½	31½	32	32½	33	33¼
Sleeve Length from Center Back	33¾	34½	35¼	36	36¾	37½	38¼	39	39½	40

Chest Width

Measured across the chest one inch below armhole when laid flat.

Body Length at Back

Measured from high point shoulder to finished hem at back.

Sleeve Length from Center Back

Measure From CB Neck to Shoulder Point to Finished Sleeve Hem.



Style J317 Measurements:

	XS	S	M	L	XL	2XL	3XL	4XL	5XL	6XL
Chest Width	20	21½	23	24½	26	27½	29½	31½	33½	35½
Body Length at Back	26½	27½	28½	29½	30½	31½	32	32½	33	33¼
Sleeve Length from Center Back	33¾	34½	35¼	36	36¾	37½	38¼	39	39½	40

Chest Width

Measured across the chest one inch below armhole when laid flat.

Body Length at Back

Measured from high point shoulder to finished hem at back.

Sleeve Length from Center Back

Measure From CB Neck to Shoulder Point to Finished Sleeve Hem.



Style J317 Measurements:

	XS	S	M	L	XL	2XL	3XL	4XL	5XL	6XL
Chest Width	20	21½	23	24½	26	27½	29½	31½	33½	35½
Body Length at Back	26½	27½	28½	29½	30½	31½	32	32½	33	33¼
Sleeve Length from Center Back	33¾	34½	35¼	36	36¾	37½	38¼	39	39½	40

Chest Width

Measured across the chest one inch below armhole when laid flat.

Body Length at Back

Measured from high point shoulder to finished hem at back.

Sleeve Length from Center Back

Measure From CB Neck to Shoulder Point to Finished Sleeve Hem.

